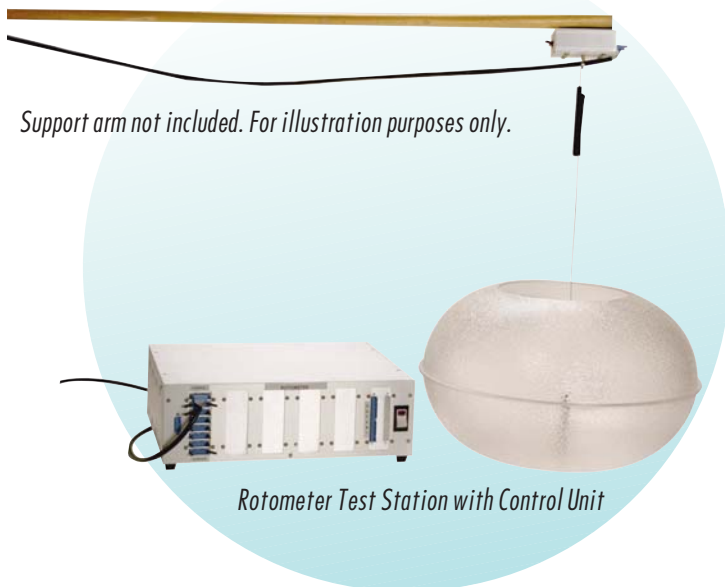


## ROTOMETER SYSTEM

*The most powerful, flexible and easy to use system for motor function*



### Features & Benefits

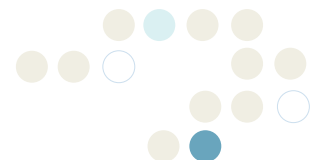
- Configure up to 16 test stations for rapid testing of large subject groups
- All study data is stored in a database, providing quick and easy export
- Independent start/stop switch
- Diagnostic function allows for testing of each enclosure and displays status
- Run Session monitors ongoing activity during testing
- Full-turn or quarter-turn options
- Test in progress monitoring

### PRODUCT OVERVIEW

SDI's Rotometer System is a powerful activity system designed to record the subject's clockwise and counter clockwise rotations. SDI's Rotometer has been used widely in Traumatic Brain Injury and Spinal Cord Injury studies. The system can be configured with up to 16 stations for testing large subject groups. Each station starts and runs independently making continuous testing quick and easy. An optional quarter turn version of the system can be utilized to count partial rotations. SDI's Rotometer takes full advantage of the Windows® operating system with data organization and management software that combines power and flexibility with ease of use. Elapsed time-in session and activity counts are displayed continuously for each enclosure. The Run Session screen allows you to monitor the ongoing activity during testing. Rotometer utilizes a database to store all study results in a single file (table) format ready for export. This eliminates the need to cut and paste multiple files together in order to export study results to statistical packages.

### ROTOMETER SYSTEM COMPONENTS

- Standard, 18" Test Station with Sloped Floor
- Lightweight Adjustable Harness
- Independent Start/Stop Switch
- Control Unit
- Software
- User Manual
- All Cables and Connectors



## ROTOMETER SPECIFICATIONS

Dimensions	4" (D) x 3" (W) x 2" (H), Sensor Unit, 18" Enclosure
Material Composition	Aluminum, Acrylic
Maximum # Stations	16
# of Photobeams	3 per station inside sensor box
Standard Cable Length	12 ft.
Certifications	CE

## ROTOMETER COMPUTER REQUIREMENTS

Windows 2000/XP compatible computer system with available PCI slot. Minimum disk and memory sizes specified to support Windows 2000/XP are acceptable.

## SDI CONFIGURED COMPUTERS

SDI offers high performance Cobalt™ Configured Computers that are pre-installed with the Windows® operating system and applicable SDI software. If required, SDI will pre-install PC Interface cards and all relevant drivers. Each computer is fully tested with your system prior to shipment. When your SDI system arrives, all you have to do is unpack it, attach the cables and begin testing.

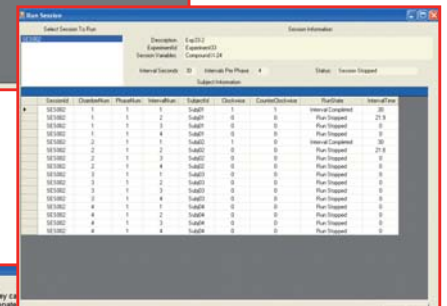
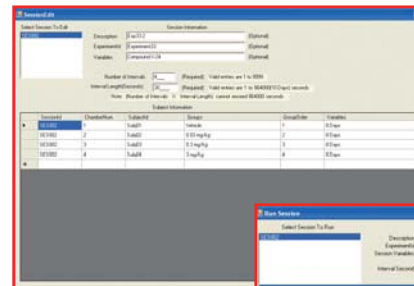
## FOR MORE INFORMATION

To learn more about SDI behavioral testing systems, please visit [www.sandiegoinstruments.com](http://www.sandiegoinstruments.com). If you have any questions or would like to request a quote please call (858) 530-2600 or email us at [sales@sandiegoinstruments.com](mailto:sales@sandiegoinstruments.com).

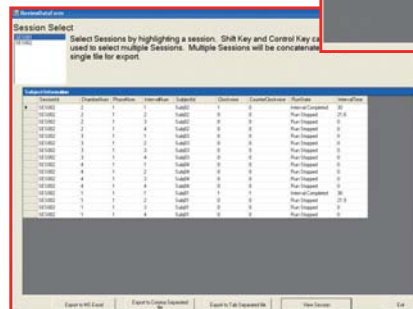
## SDI ACTIVITY TEST SYSTEMS

- Photobeam Activity System-Home Cage
- Photobeam Activity System-Open Field
- Place Preference
- Rotometer

*Rotometer Session Edit Screen*



*Rotometer Run Session Screen*



*Rotometer Data Spread Sheet*



San Diego Instruments, Inc.  
6295 Ferris Square, Suite A  
San Diego, CA 92121  
Ph: 858-530-2600  
Fax: 858-530-2646  
[www.sandiegoinstruments.com](http://www.sandiegoinstruments.com)

©2009 San Diego Instruments. All rights reserved. SDI and the SDI logo are trademarks of San Diego Instruments, Inc. All other trademarks mentioned herein are property of their respective owners. Specifications are subject to change without notice. The equipment described herein is designed for research and educational purposes and is not intended for the diagnosis, alleviation, treatment, monitoring or prevention of disease, injury or handicap.  
0209-ROTOMETER