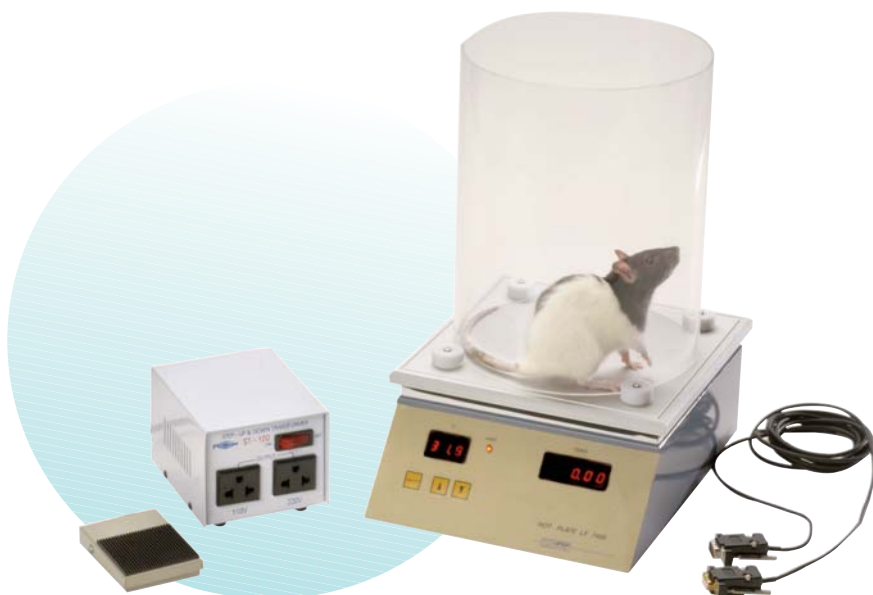


HOTPLATE ANALGESIA METER

System for testing heat-induced pain in rats and mice



Features & Benefits

- Digital set point
- Built-in electronic timer
- 1 ms resolution
- Foot switch timing operation
- Acrylic animal cage
- Computer interface

PRODUCT OVERVIEW

SDI's Hotplate Analgesia Meter performs rapid and precise screening of analgesic effective drugs on test subjects. The hot plate method evaluates the reaction time of rats and mice when confronted with a heat stimulus to the plantar surface. Optional recording software is included.

The aluminum heating surface contains thin, high-surface heating elements which provide even temperature to the entire test area. A solid state temperature regulator senses the plate temperature via an embedded sensor and powers the heating elements through a "proportional" circuit that minimizes overshoot. A solid state read-out monitors the plate temperature in 0.1 degree Celsius increments. The target temperature is selectable from 45 – 65 degrees Celsius. A built-in electronic timer with 0.01 second precision for accurate timing of the subject's reaction is easily operated with a pedal switch. Pressing the pedal once starts the timer, pressing it again records latency. The subjects are confined in the Hotplate Analgesia system by a clear, removable acrylic hood.

For each trial, data including the number of the trial (TR), the current plate temperature (PT), and the subject's reaction time (RT) is transferred to the PC for printing or future analysis.

HOTPLATE ANALGESIA COMPONENTS

- Base with Heating Plate
- Acrylic Animal Enclosure
- Foot switch
- SeDaCom Software
- User Manual
- All cables and connectors



HOTPLATE ANALGESIA SPECIFICATIONS

Base Dimensions	8.7" (W) x 11" (D) x 4 ¼" (H)
Plate Dimensions	8.7" (W) x 8.7" (D)
Cylinder Dimensions	7 ½" (D) 9 ¾" (H)
Material Composition	Clear acrylic (animal holder), aluminum (plate)
Maximum # Stations	1 per computer
Certifications	CE Compliant

HOTPLATE ANALGESIA COMPUTER REQUIREMENTS

Microsoft® Windows 2000/XP compatible computer system with serial port. Minimum disk and memory sizes specified to support Microsoft Windows 2000/XP are acceptable.

SDI CONFIGURED COMPUTERS

SDI offers high performance Cobalt™ Configured Computers that are pre-installed with the Windows® operating system and applicable SDI software. If required, SDI will pre-install PC Interface cards and all relevant drivers. Each computer is fully tested with your system prior to shipment. When your SDI system arrives, all you have to do is unpack it, attach the cables and begin testing.

FOR MORE INFORMATION

To learn more about SDI behavioral testing systems, please visit www.sandiegoinstruments.com. If you have any questions or would like to request a quote please call (858) 530-2600 or email us at sales@sandiegoinstruments.com.

SDI MOTOR & SENSORY TEST SYSTEMS

- Animal Grip Strength System
- Hotplate Analgesia Meter
- ROTOR-ROD™
- Tail Flick Analgesia Meter
- Pressure Analgesia Meter



San Diego Instruments, Inc.
6295 Ferris Square, Suite A
San Diego, CA 92121
Ph: 858-530-2600
Fax: 858-530-2646
www.sandiegoinstruments.com

©2009 San Diego Instruments. All rights reserved. SDI and the SDI logo are trademarks of San Diego Instruments, Inc. All other trademarks mentioned herein are property of their respective owners. Specifications are subject to change without notice. The equipment described herein is designed for research and educational purposes and is not intended for the diagnosis, alleviation, treatment, monitoring or prevention of disease, injury or handicap.

0209-Hotplate